

MILLION  N
BEYOND ILLUMINATION
Since 1974

Table of Contents

05	ABOUT US	
	<i>Profile</i>	
	<i>Presence</i>	
	<i>Competitive Advantage</i>	

13	LEADERSHIP	
-----------	-------------------	--

17	RETAIL AND DISTRIBUTION	
-----------	--------------------------------	--

25	PROJECTS	
	EXTERIOR <i>Façade and Landscape</i>	29
	INTERIOR <i>Commercial</i>	37
	EXTERIOR <i>Hospitality</i>	79
	EXTERIOR <i>Institutions</i>	185

201	CORPORATE SOCIAL RESPONSIBILITY	
------------	--	--

**“In the right light, at the
right time, everything
is extraordinary.”**

Aaron Rose





PROFILE

Lighting is the pivotal factor in creating the perfect ambience for any setting. By influencing and controlling different types of lighting, the mood of a room can change from calm and romantic to energising and vibrant.

At Million Lighting, we stretch the possibilities of lighting to a different level. By combining creativity and technology, we introduce cutting-edge customised lighting designs that raise lighting to a true art form while never compromising function. By doing so, we have created a wide spectrum of diverse ambiances for the region's most high-profile institutions and corporations, award-winning hotels, world-renowned entertainment and leisure parks, as well as private residences.

As a pioneer of the lighting industry in Singapore, Million Lighting brings to the table four decades of illuminating trends and innovations. Being one of Singapore's leading lighting companies, Million Lighting has distinguished

itself as a provider of high-quality, innovative holistic lighting solutions, for discerning developers, architects and interior designers.

At Million Lighting, we understand the power of lighting in influencing mood, textures and overall well-being. The concept of space and influencing spatial perceptions form the basis of our creations. We take pride in providing a comprehensive suite of services, from retail and distribution, to decorative lighting customisation and technical support. Our team of lighting designers, engineers and product specialists brings in-depth knowledge and vast experience to every project as well as steadfast commitment to quality, innovative design, technical excellence and dedicated after-sales support.

Bearing testimony to our accomplishments is an extensive portfolio of high-profile projects undertaken locally and internationally, spanning exterior work on facades and landscaping, as well as interior work for residential, commercial and mixed-use properties.

COMPETITIVE ADVANTAGE

A 5-pronged approach underscores our comprehensive services to ensure that our lighting solutions meet client expectations. The team is well-placed to work alongside architects and interior designers to define lighting solutions that deliver from the onset. In addition, we deploy our technical team onsite, locally or overseas, to review site requirements and resolve installation issues if the need arises.

INTEGRATION

From architectural meshes to customising fixture housings to innovative cable routing, we provide lighting solutions that blend seamlessly with any design.

CONTROL SOLUTIONS

Different projects have different lighting needs. Our team of professionals will advise you on control solutions ranging from simple dimming with colour changes to video-like effects, offering a flexibility that enables us to meet almost any lighting effect requirement.

CUSTOMISATION

From lighting fixtures to complex decorative and architectural lighting schemes, we provide custom design and manufacturing for individual projects upon request.

SCALABILITY

Coordinated lighting effects on building facades or spanning across interiors that cover extremely large spaces, our customised solutions have been well-received.

APPROACHABILITY

Our involvement can take any shape, at any stage of your project

MANUFACTURING FACILITY & RESOURCE NETWORKS

Manufacturing is conducted at our well-equipped facility in China, where fabrication is carried out to the exacting standards and precision demanded by our in-house quality control teams.

Over the years, we have also established a wide resource network across the global arena to provide a complete range of materials and fittings.



HEAD OFFICE & THE LIGHTING GALLERY SINGAPORE

203 Kallang Bahru
Million Building
Singapore 339340
T +65 6743 2033 | F +65 6748 1109
E enquiry@millionlighting.com

BEYOND ILLUMINATION SDN BHD MALAYSIA

Box 442 Lot 4.18
4th Floor Wisma Central, Jalan Ampang 50450
Kuala Lumpur, Malaysia
T +60 3 2856 9405
E beyond@millionlighting.com

LEADERSHIP



Edwin Chua

Chief Executive Officer

A graduate of Boston University, USA with a degree in Business Administration, Edwin has more than 20 years of experience in the lighting industry. Having always taken an active interest in the business, he joined Million in 1995. Displaying a sharp mind, good business acumen and technical understanding, he helms all aspects of the business, from project management to retail, manufacturing and finances.



Nana Au-Chua

Chief Operating Officer

A graduate of Boston University, USA with a degree in Biology and Business Administration, Nana worked as a banker with Hong Leong Finance and Bank of America before joining her husband, Edwin, at Million in 1999. Responsible for business development in Singapore and the region, she has been instrumental in realising Million's potential to meet the lighting needs of contemporary architects, whose styles veer towards sleek simplicity. Her ability to forge strong client relationships and identify emerging trends has helped cement Million's position as a relevant force in the industry.



Jack Ong

General Manager

With over 10 years of experience in the lighting industry, Jack has brought not only his expertise and competence to the table but also his unparalleled dedication. Being at the helm of the entire operations overseeing production, logistics and procurement, he has never ceased to spur new developments and implement processes that have contributed to the growth of Million over the years. Moreover, he is still involved in project management and has piloted some of our key projects.



**“A room is like a stage.
If you see it without lighting,
it can be the coldest place
in the world.”**

Paul Lynde

RETAIL & DISTRIBUTION

THE LIGHTING GALLERY

Our showroom, The Lighting Gallery, showcases an impressive range of decorative and architectural lighting collections by some of the world’s leading brands including Saint-Louis, Artemide, Marset, LZF, Kartell and many more.

The Lighting Gallery provides inspirations for developers, architects, interior designers and homeowners seeking to enhance their property or project needs with limitless choices and the latest international lighting designs and innovations.

BRANDS

ST LOUIS

Artemide

marset

lzf

Kartell

DCWéditions
PARIS

DISTRIBUTION

ERCO

FOSCARINI

ModuleX®

MODULAR
LIGHTING —
INSTRUMENTS

TOKISTAR®







"Lighting can diffuse, mask or take the eyes where you want them."

JoAnn Gregoli

PROJECTS

Since its inception, Million Lighting has successfully completed both local and international projects in collaboration with world class interior designers, architects and lighting consultants. Primarily our high-end projects range from façade and landscaping to interiors of residential, hospitality, retail malls and commercial properties as well as mixed used integrated developments. Over the years, our presence has escalated to greater heights and has continuously leaped forward by tapping new emerging markets and forging partnerships with more clientele.

Million continuously to breaks barriers, sets new lighting trends and meet evolving demands in the industry by intensifying our R&D and exploring innovative production techniques. Furthermore, we envision to go beyond our current territories and make our presence felt on a global scale.

EXTERIOR

FACADE & LANDSCAPE LIGHTING

Facade and landscape lightings are key components that form the overall appearance of a development.

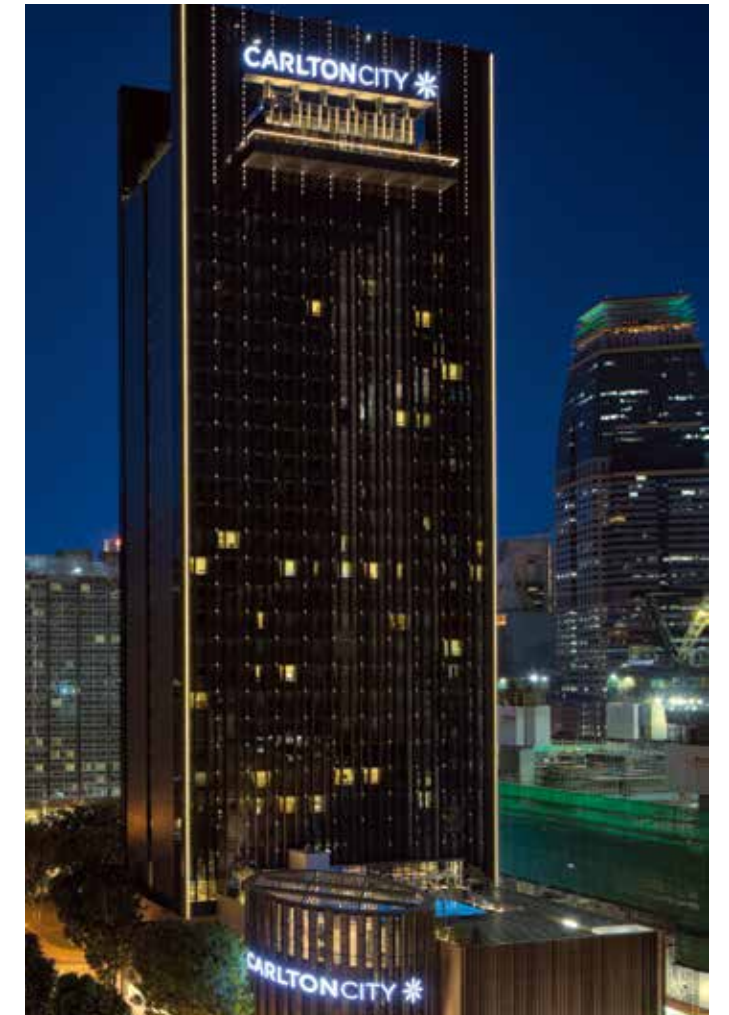
These lightings not only highlight the special features of the architecture, they also help turn buildings into iconic landmarks that blend into the cityscape.

Carlton City Hotel

Singapore // Facade

Carlton City is the second property of the Carlton brand. It exudes newness throughout, from its art decorated foyer walls to the exquisitely crafted interiors and facade lighting. Experience the best of the new in the Tanjong Pagar district, one of Singapore's most exciting historical neighbourhoods. Carlton City is finely attuned to the needs of well-travelled guests who have a taste for style and comfort.

SCOPE OF WORK	Façade Lighting
CLIENT	Carlton City Properties
ARCHITECT	DP Architects
INTERIOR DESIGNER	Hirsch Bedner Associates
LIGHTING CONSULTANT	The Lightbox
PROJECT DATE	2013





Four Seasons Hotel Kuala Lumpur

Malaysia // Facade

A promise to carve new standards in luxurious hospitality, the legendary Four Seasons adds yet another feather in its cap with the latest landmark address in the thriving metropolis of Kuala Lumpur. An urban oasis which is set to benchmark prestige and luxury, Four Seasons Kuala Lumpur vows to exemplify a unique interpretation of 5-star experience ensuring a complete Four Seasons lifestyle.

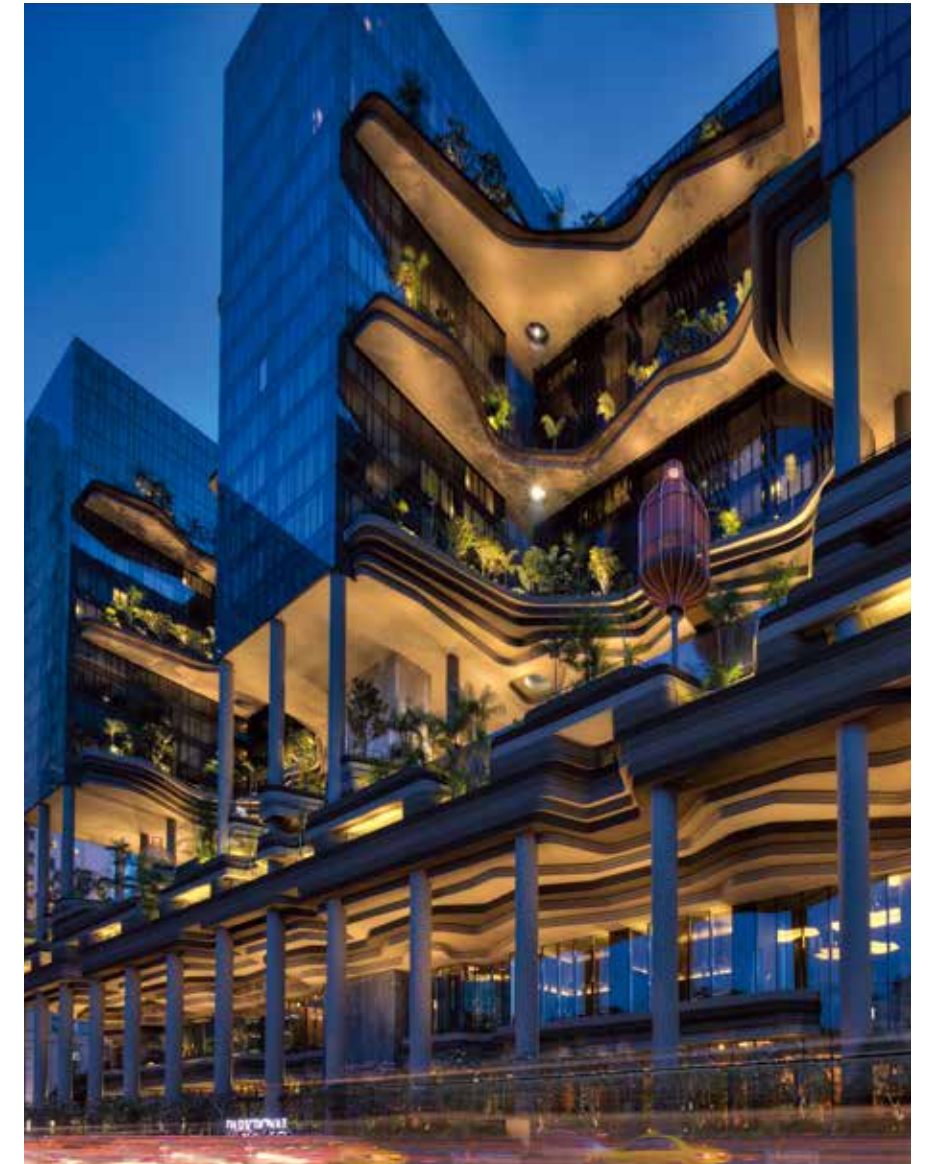
SCOPE OF WORK	Façade Lighting
CLIENT	Hotel Properties Limited
INTERIOR DESIGNERS	Wilson Associates / AB Concept
LIGHTING CONSULTANT	Light Cibles
PROJECT DATE	2018



PARKROYAL on Pickering

Singapore // Façade

Featuring lush sky gardens, reflecting pools and cascading vertical greenery, PARKROYAL on Pickering boasts a unique hotel-in-a-garden concept that seamlessly blends environmental principles with elements of nature throughout the property.



SCOPE OF WORK	Façade & Architectural Lighting
CLIENT	UOL Group
ARCHITECT	WOHA Architects
LIGHTING CONSULTANT	Lighting Planners Associates
PROJECT DATE	2013

INTERIOR

COMMERCIAL

Commercial projects require sound understanding and flexibility to meet each client's unique needs, objectives and timelines. From MNCs to retail outlets, we deliver lighting strategies and products that meet the client's stringent requirements.



Atlas Gourmet Market

Malaysia // Commercial

A specialty market and a restaurant, the Atlas Gourmet strives to set the bar high in curating meticulously picked gourmet specialties across the globe. Fit for the discerning gourmands and the fine palates, it showcases a gastronomic extravaganza of best quality and uncompromising standards.

SCOPE OF WORK Architectural Lighting
CLIENT Venus Assets
INTERIOR DESIGNER eco-id
LIGHTING CONSULTANT Myna
PROJECT DATE 2018





Bar Rouge

Singapore // Commercial

Elevating nightlife to greater heights, Shanghai's iconic Bar Rouge has invaded the 71st floor of the Swissotel The Stamford. With a picturesque Marina Bay skyline in full view, a sensory clubbing experience awaits the glitterati as they rave to the pulsating beats, immerse in the electrifying light effects and soak in a wide medley of cocktails



SCOPE OF WORK Architectural & Special Effects Lighting
CLIENT Accor Hotels
INTERIOR DESIGNER naço
LIGHTING CONSULTANTS Million Lighting / Harman
PROJECT DATE 2018



Centennial Tower

Singapore // Commercial

A distinctively innovative architectural landmark first designed by Pritzker Prize laureate Kevin Roche and re-envisioned by Pritzker Prize laureate Thom Mayne, the Centennial Tower stands out amidst the towering skyscrapers in Singapore. While blending perfectly with the curvilinear contour of Temasek Avenue, this elliptical structure is distinguishably clad in interlinking window modules embellished with a humongous crown of ornamental trellis.



SCOPE OF WORK Architectural Lighting
CLIENT Pontiac Land Group
LIGHTING CONSULTANT Nipek
PROJECT DATE 2017



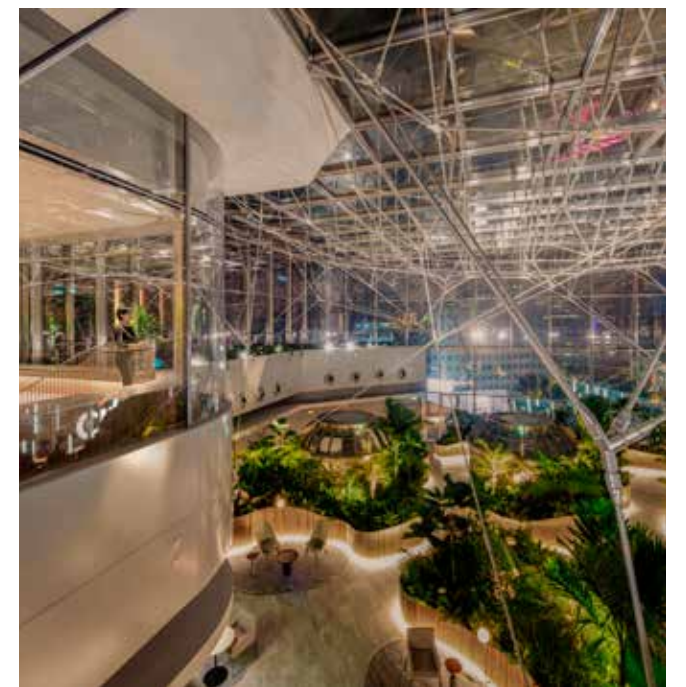
Citi Wealth Hub at 268 Orchard Road

Singapore // Commercial

The largest wealth hub globally, the Citi Wealth Hub at 268 Orchard Road takes premium banking experience for its high net-worth clients into a whole new level. Integrating a thoughtful biophilic design, engagements are held in garden meeting pods instead of the run-of-the-mill bespoke lounges and guests are hosted in an array of manicured spaces. Certainly a game changer in the banking industry, this urban utopia has set a new benchmark of sustainable luxury.

SCOPE OF WORK	Architectural and Decorative Lighting
CLIENT	Citibank
INTERIOR DESIGNER	Ministry of Design
LIGHTING CONSULTANT	Lighting Planners Associates
PROJECT DATE	2020





Collision 8

Singapore // Commercial

As a Collaborative Innovation Workspace, Collision 8 brings innovators together to ignite ideas, form alliances, and shape the business world of tomorrow. It offers membership to a community of ambitious innovators. Engineering serendipity through member curation and personalised introductions, it fosters high value connections between members. Collision 8 provides top-of-the-line workspaces that inspire, energise, and bring ideas to life.

SCOPE OF WORK Architectural Lighting
CLIENT Collisions 8
DESIGNER Asylum Creative
LIGHTING CONSULTANT Switch
PROJECT DATE 2016





The Dempsey Cookhouse & Bar



Candlenut

Como Dempsey

Singapore // Commercial

Punctuating the transformation of the hip dining enclave, Tanglin Village, comes a unique conceptual lifestyle destination set amidst the lush and verdant Dempsey Hill. The COMO Dempsey described as original, innovative and dynamic, marries retail, fashion and dining.

COMO Dempsey integrates world-renowned retail concept store **Dover Street Market** conceived by Rei Kawakubo of Comme des Garçon, **The Dempsey Cookhouse & Bar** by Michelin-starred chef Jean-Georges Vongerichten; **Candlenut**, the world's first Michelin-star Peranakan restaurant by chef Malcolm Lee; **Ippoh Tempura Bar** by **Ginza Ippoh** and **COMO Cuisine** complemented by **COMO Marketplace**, a gourmet outlet of curated Asian epicurean products.

SCOPE OF WORK Architectural & Decorative Lighting
CLIENT COMO Lifestyle
INTERIOR DESIGNER Otto
PROJECT DATE 2018

The Dempsey Cookhouse & Bar
LIGHTING CONSULTANT L'Observatoire International

Candlenut & Ippoh Tempura Bar
LIGHTING CONSULTANT Nipek



Ippoh Tempura Bar



Culina Market

Singapore // Commercial

A gourmet retail and dining experience awaits the discerning at the Culina Market where an expansive range of curated produce and products are scrupulously sourced from all corners of the world. With its in-store butchery, delicatessen counters and speciality food emporium, this gentrified enclave atop the verdant Dempsey Hills is the address for gourmands and professional chefs seeking for only the finest.



SCOPE OF WORK	Architectural Lighting
CLIENT	COMO Lifestyle
INTERIOR DESIGNER	Otto
LIGHTING CONSULTANT	L'Observatoire International
PROJECT DATE	2018



Kohler Experience Centre

Singapore // Commercial

True to its vision, the Kohler Experience Centre is interactive, immersive and experiential. One of its kind in Singapore, this conceptual bathroom and kitchen arsenal offers a unique shopping experience to consumers, architects and designers with its hand-on access to the quintessential functionalities and features of Kohler masterpieces.

SCOPE OF WORK	Architectural Lighting
CLIENT	Kohler Singapore
INTERIOR DESIGNER	LTW Designworks
LIGHTING CONSULTANT	Nipek
PROJECT DATE	2017



La Strada

Singapore // Commercial

Reinterpreted Italian classics housed in a revamped Trattoria-style restaurant, La Strada paves way to a whole new Italian dining experience in Singapore. The experience is likened to a journey to a nostalgic Italian countryside far away from the hectic urban jungle. With the authentic Italian gastronomic delights set in a charming and laid back ambience, it promises a total escape to pure decadence.



SCOPE OF WORK	Architectural & Decorative Lighting
CLIENT	Les Amis Group
INTERIOR DESIGNER	Fuur Associates
LIGHTING CONSULTANTS	Fuur Associates / Million Lighting
PROJECT DATE	2018

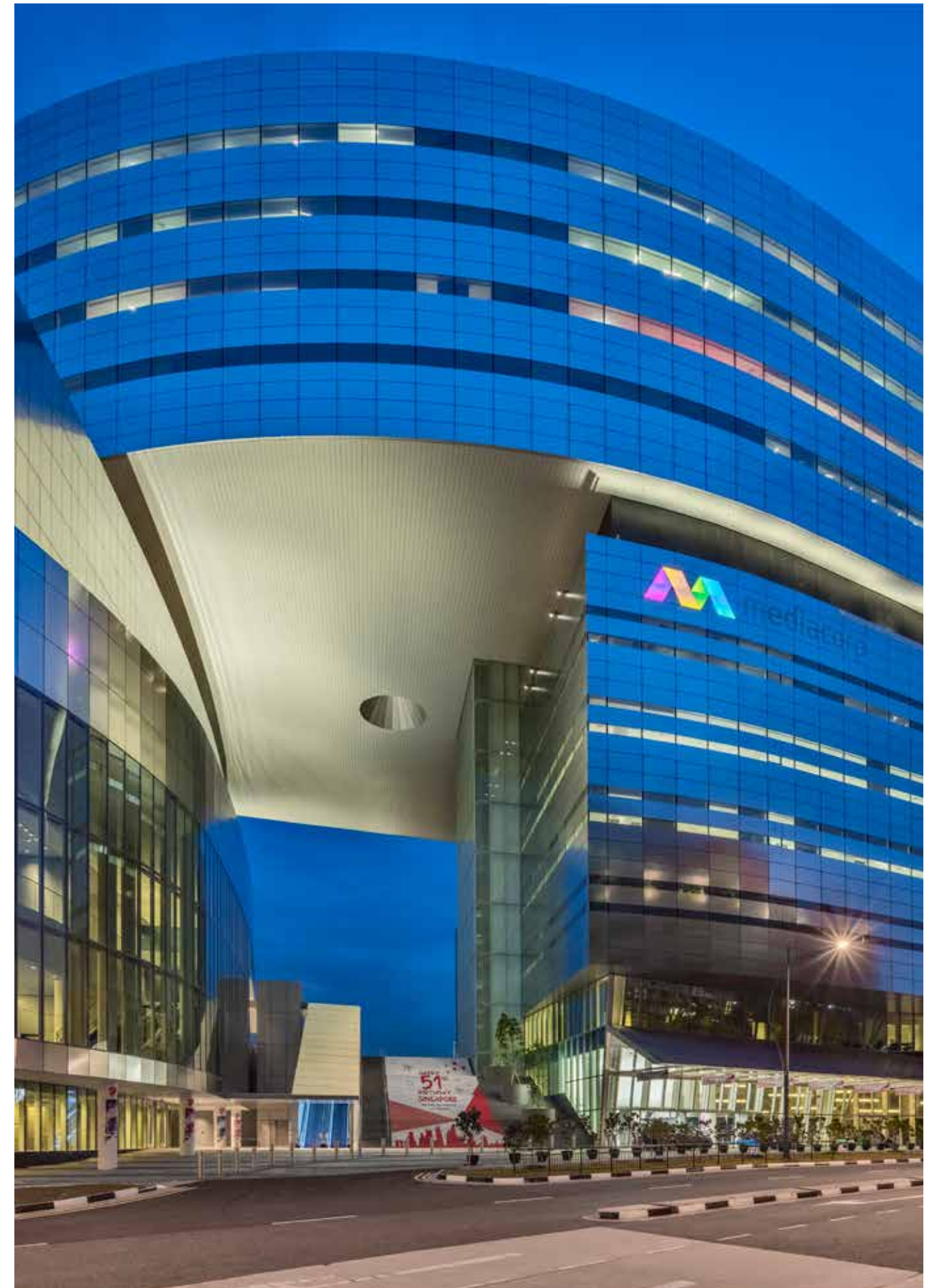


Mediacorp Campus

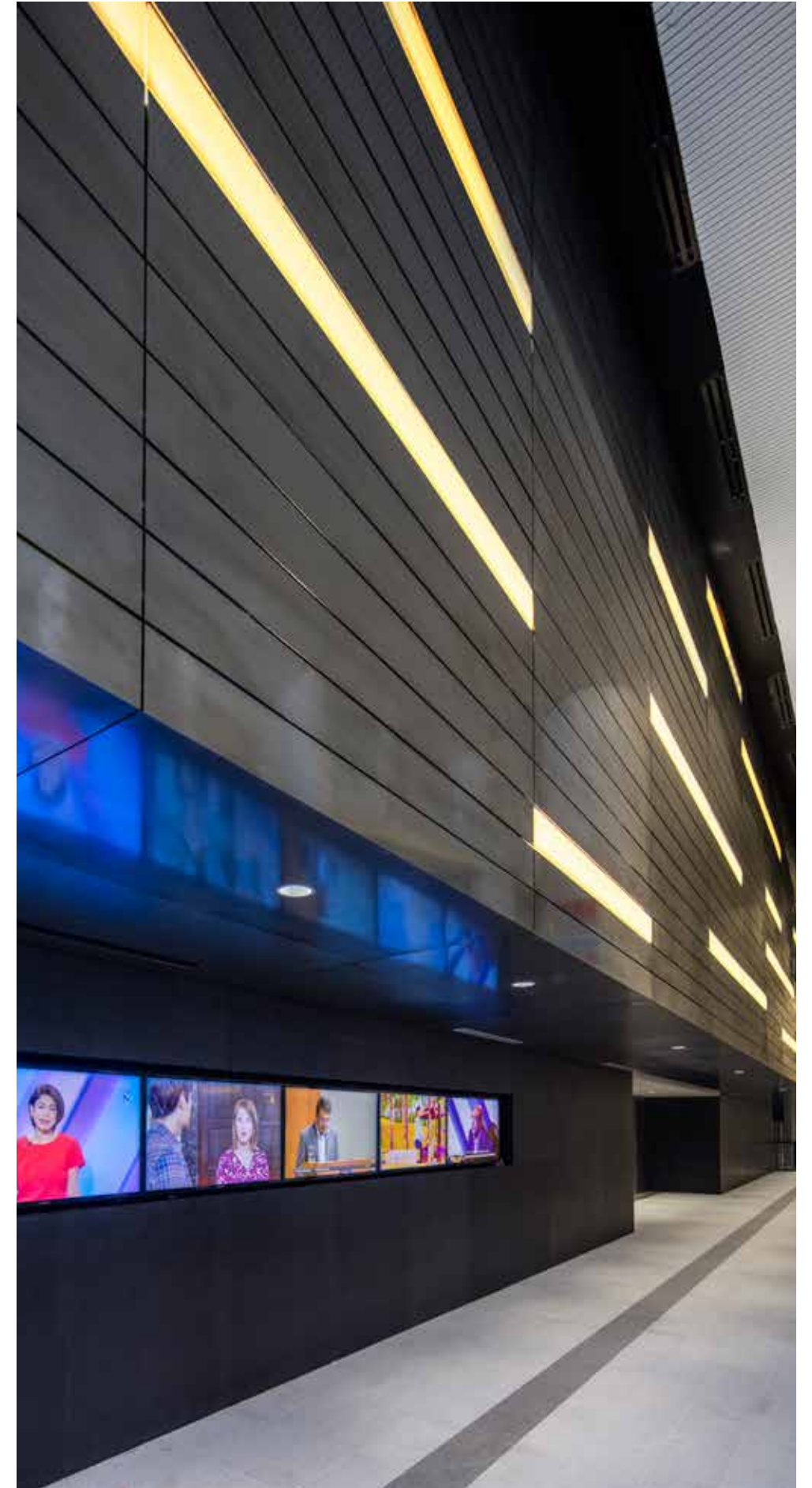
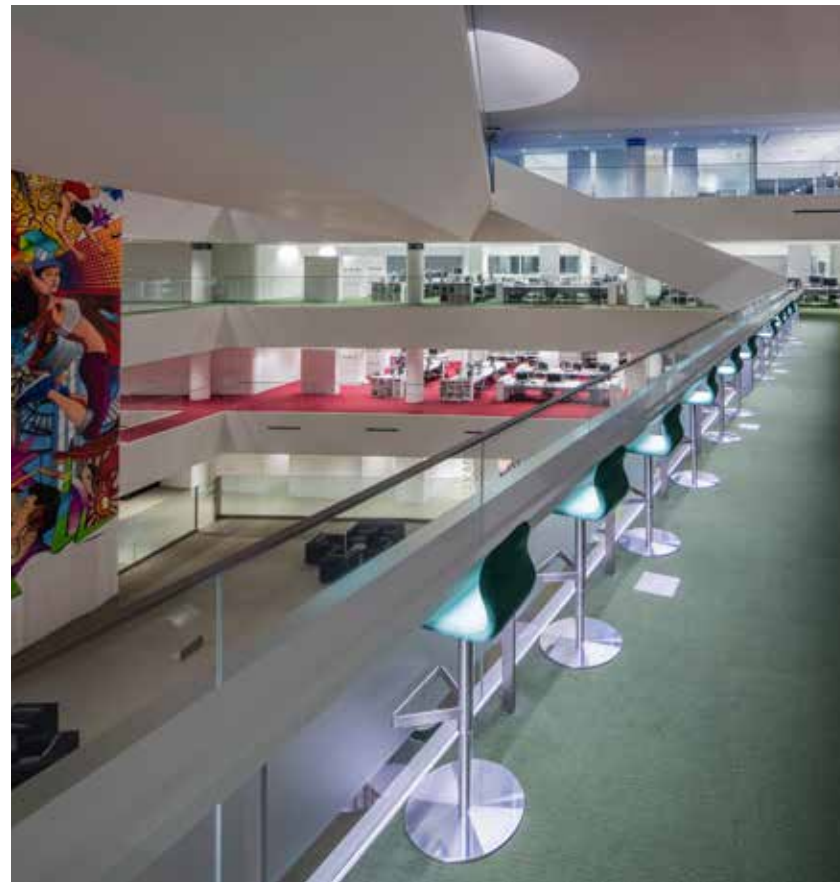
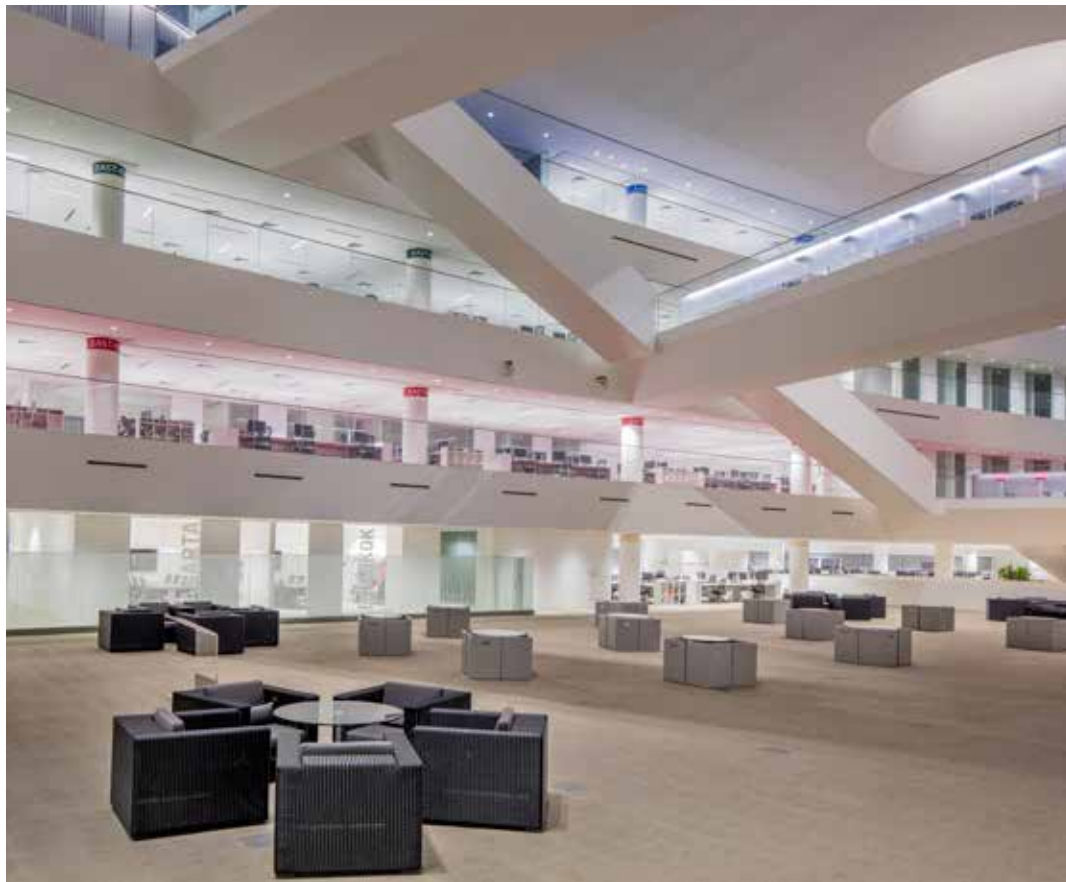
Singapore // Commercial

Nestled within Singapore's first digital media hub Mediapolis@one-north, the new Mediacorp Campus proudly wears its award-winning design by acclaimed Japanese architect Maki & Associates. Equipped with a state-of-the-art 1,500-seat theatre and advanced media technology, this masterpiece gleams with sheer brilliance, igniting infinite possibilities in the minds of its viewers.

SCOPE OF WORK	Architectural Lighting
CLIENT	Mediacorp
ARCHITECTS	DP Architects / Maki and Associates
LIGHTING CONSULTANT	Lighting Planners Associates
PROJECT DATE	2016









Prego

Singapore // Commercial

The newly spruced up old-time favourite trattoria reopens at the Fairmont. With its classic decadence sprinkled with fresh and new signatures, the Prego dining experience has elevated itself a notch higher. Housed in a charming rustic-industrial styled interior, it remains true to its authentic Italian indulgence. From the aroma of wooden-fired ovens to its handcrafted noodles, Prego certainly leaves a lasting impression.

SCOPE OF WORK	Architectural & Decorative Lighting
CLIENT	Accor Hotel
INTERIOR DESIGNER	Grey Matters
LIGHTING CONSULTANT	Black Lighting
PROJECT DATE	2019





Robinsons Kuala Lumpur

Malaysia // Commercial

A benchmark in shopping experience with a rich heritage of more than 160 years, Robinsons remains true to its vision of going beyond shopping by bringing forth continuous retail innovation. From personal butler services, exclusive designer labels, high-end gourmet dining to trendy lifestyle products, it never ceases to curate only the finest.

SCOPE OF WORK Architectural Lighting
CLIENT Venus Assets
LIGHTING CONSULTANT Million Lighting
PROJECT DATE 2017



Wilson Associates

Singapore // Commercial

A melting pot of creative geniuses across the globe, Wilson Associates is celebrated for its decades of innovative designs for luxury and boutique brands. Standing strong all these years, it continuously redefines the hospitality landscape with its wide range of services housed in creative studios oozing with charm and character just like its Singapore office.



SCOPE OF WORK Architectural & Decorative Lighting
CLIENT Wilson Associates
INTERIOR DESIGNER Wilson Associates
LIGHTING CONSULTANT Million Lighting
PROJECT DATE 2018



INTERIOR

HOSPITALITY

Lighting is essential to hospitality developments in creating an inviting atmosphere that is as aesthetically welcoming as it is functional. Our professionals understand the importance of putting together decorative and architectural lighting proposals in line with every client's unique requirements and expectations.



Capri by Fraser - Changi City Singapore

Singapore // Hospitality

Capri by Fraser is a revolution in hospitality. Harnessing the best in smart hotel technology, this hotel provides comfort in a unique way that is both informal and professional. Boasting facilities such as a high-tech boardroom with touch-screen capabilities, a steam room and sauna, and Xbox Kinect on every floor, Capri by Fraser caters to both your business and leisure needs.

SCOPE OF WORK	Decorative Lighting
CLIENT	Fraser's Hospitality
ARCHITECT	eco-id
PROJECT DATE	2012



Club Liberte

Seychelles // Hospitality

A premiere casino destination in the heart of the Four Seasons Resort at Petite Anse in Seychelles, Club Liberté Casino boasts unparalleled quality gaming in luxurious gaming rooms, state-of-the-art slot machines and tantalising menu to suit every discerning palate. More than just a gambling den, Club Liberté offers glamorous dining experience and vibrant entertainment.

SCOPE OF WORK	Decorative Lighting
CLIENT	Zenith Entertainment
INTERIOR DESIGNER	Ori De Corti Design
LIGHTING CONSULTANT	Myna
PROJECT DATE	2016







Conrad Centennial

Singapore // Hospitality

A playground for the opulent vagabonds of diverse tastes and preferences, the Conrad Centennial Singapore is the perfect escape for thrill seekers, foodies, shopaholics and what not. Effortlessly luxurious, this address promises nothing but sheer indulgence and inspiration mirrored in their world-class hospitality. Located within the vibrant downtown Singapore, it opens doors to infinite possibilities for business and leisure travellers.

SCOPE OF WORK	Decorative Lighting
CLIENT	Pontiac Land Group
INTERIOR DESIGNER	Jaya International Design
LIGHTING CONSULTANT	Nipek
PROJECT DATE	2017

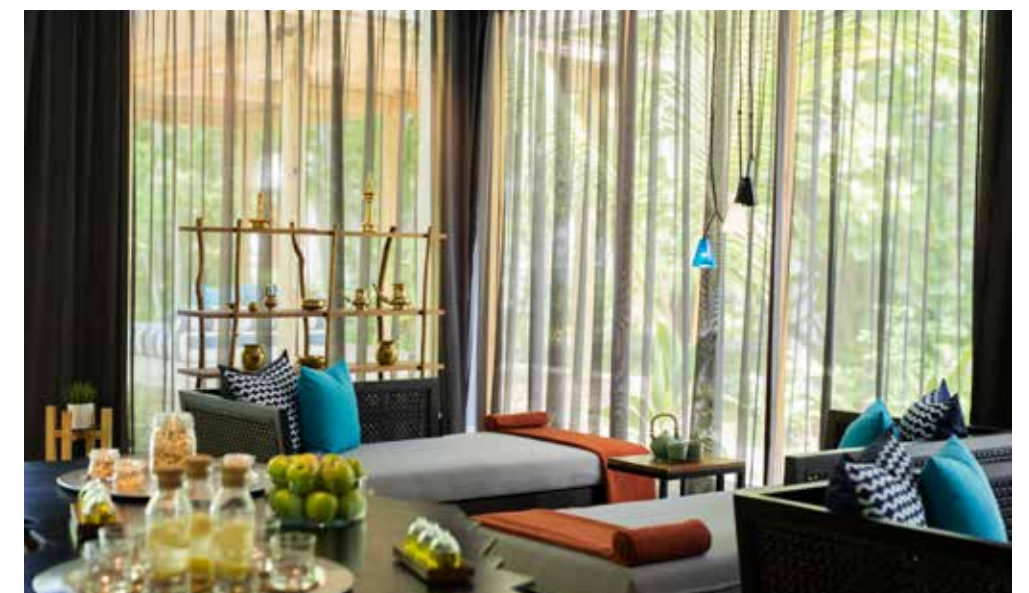


Dhigali Resort

Maldives // Hospitality

The bare necessities of luxury, Dhigali is boldly chic. Set against a panoramic postcard of unrivalled paradise awaits a sprawling selection of stylish villas along the seashore or above the waters, Dhigali indeed has it all. It is a perfect concoction of holistic relaxation, cultural immersion, infinite adventure and gastronomic decadence only for the discerning.

SCOPE OF WORK	Architectural Lighting
CLIENT	Coral Edge
INTERIOR DESIGNER	Olive Garden
LIGHTING CONSULTANT	Million Lighting
PROJECT DATE	2017





Fairmont Singapore

Singapore // Hospitality

A luxurious journey awaits the discerning nomads to embark on. From the lavishly decorated guestrooms equipped with accents, promising nothing but paramount indulgence to the multi-sensory gastronomic delights and riveting entertainment options designed to spoil, consistent to the unparalleled trademark Fairmont hospitality right at the heart of Singapore.

SCOPE OF WORK	Architectural and Decorative Lighting
CLIENT	Accor
INTERIOR DESIGNER	Hirsch Bedner Associates
LIGHTING CONSULTANT	Illuminate Lighting Design
PROJECT DATE	2019



Four Seasons Hotel, Jakarta

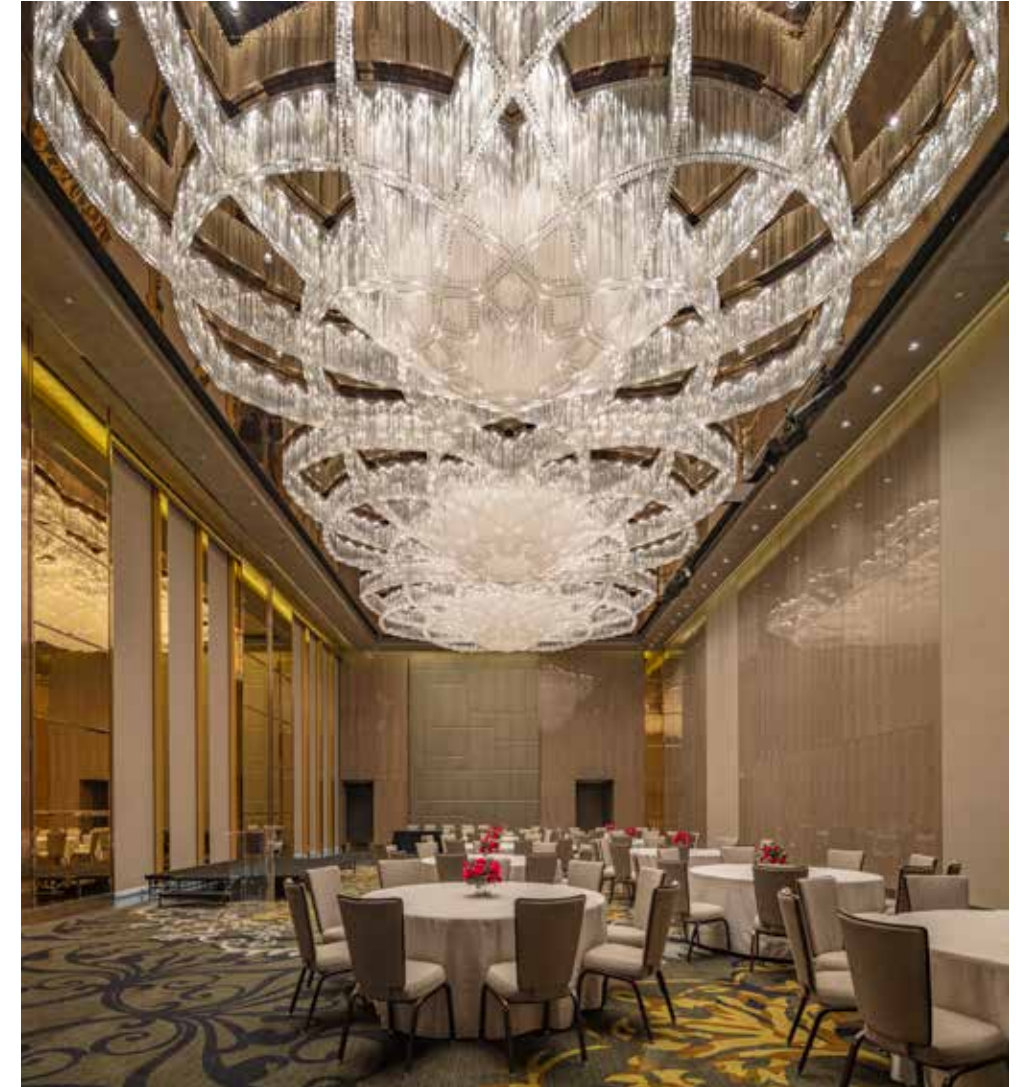
Indonesia // Hospitality

The preferred address of distinguished travellers in Jakarta, this award-winning landmark designed by the legendary César Pelli marries timeless, classic interiors with impressive, tropical spaces outdoors. A sanctuary showcasing the art of Indonesia through a carefully curated collection of works by contemporary and historic artists, the Four Seasons capitalises on decades of exemplary hospitality.



SCOPE OF WORK Decorative Lighting
CLIENT PT Greenland Rajawali Utama
INTERIOR DESIGNERS Champalimaud Design / GA Design
PROJECT DATE 2016





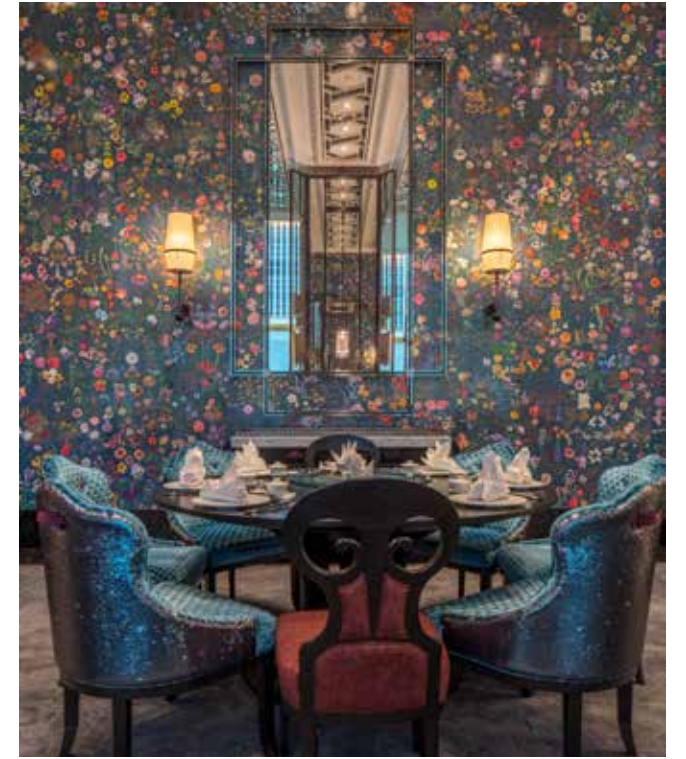
Four Seasons Kuala Lumpur

Malaysia // Hospitality

A promise to carve new standards in luxurious hospitality, the legendary Four Seasons adds yet another feather in its cap with the latest landmark address in the thriving metropolis of Kuala Lumpur. An urban oasis which is set to benchmark prestige and luxury, Four Seasons Kuala Lumpur vows to exemplify a unique interpretation of 5-star experience ensuring a complete Four Seasons lifestyle.

SCOPE OF WORK	Architectural & Decorative Lighting
CLIENT	Hotel Properties Limited
INTERIOR DESIGNERS	Wilson Associates / AB Concept
LIGHTING CONSULTANT	Light Cibles
PROJECT DATE	2018

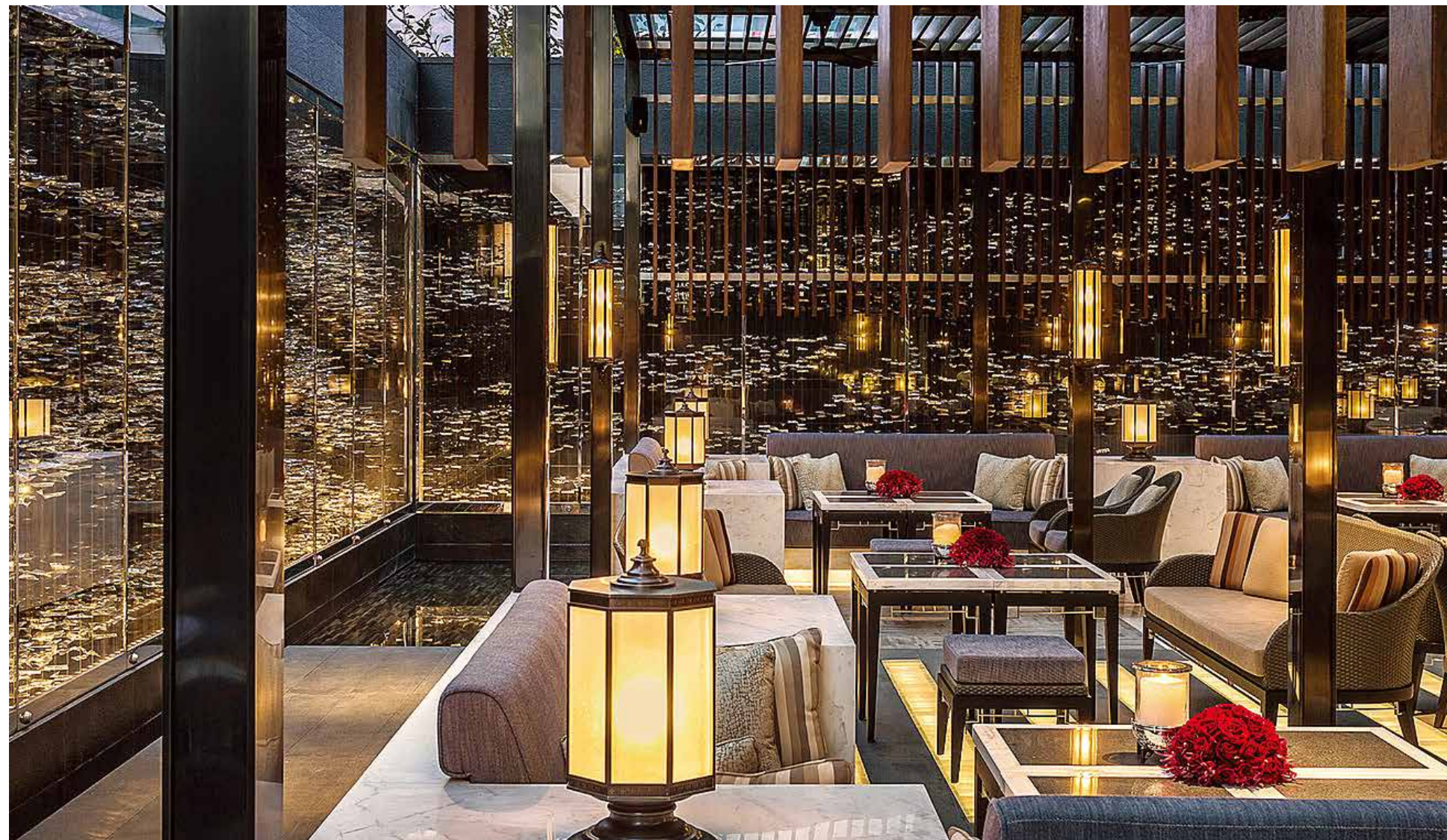




Four Seasons Hotel Shanghai at Pudong, China

China// Hospitality

This luxury hotel offers an ambience inspired by modern Shanghai's 21st-century tastes. Enjoy the unique Executive Club, an intimate spa with a city-view pool, and Shanghai's most dynamic – or most discreet – restaurants.



SCOPE OF WORK Decorative Lighting
CLIENT Hotel Properties limited
INTERIOR DESIGNER Design Studio Spin
PROJECT DATE 2011

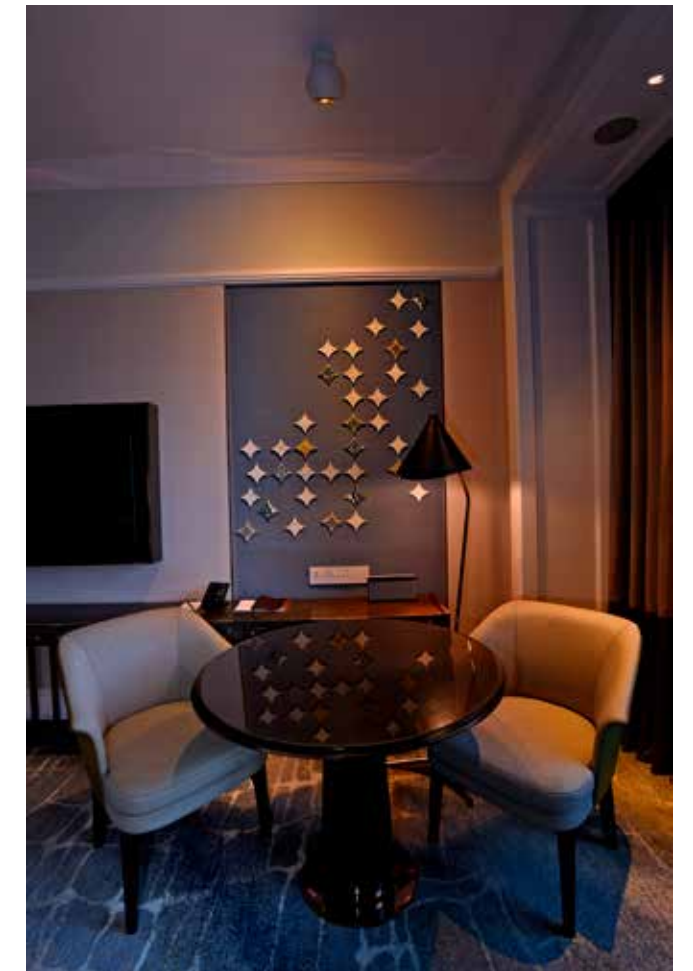
Four Seasons Hotel Singapore

Singapore // Hospitality

An escape into a lush enclave in the heart of the bustling shopping precinct, the Four Seasons Singapore elevates its signature hospitality a notch higher. With its newly-appointed guestrooms featuring a fresh colour palette inspired by the Singapore Botanic Gardens, guests are treated to a getaway punctuated with endless treats from exquisite dining to rejuvenating pampering. Truly, nothing surpasses the legendary Four Seasons.



SCOPE OF WORK Architectural & Decorative Lighting
CLIENT Hotel Properties Limited
INTERIOR DESIGNER Hirsch Bedner Associates
LIGHTING CONSULTANT Myna
PROJECT DATE 2018





Four Seasons Hotel Bali at Jimbaran Bay

Indonesia // Hospitality

Experience an authentically Balinese luxury resort nestled right at the ocean's edge, just a few steps away from the majestic shoreline and alluring beaches. A hideaway behind a stone-walled courtyard, its grand-scale homes unravels a stunning panoramic view of Jimbaran Bay at the comforts of the guest's clandestine tête-à-têtes.

SCOPE OF WORK	Architectural & Decorative Lighting
CLIENT	Hotel Properties Limited
INTERIOR DESIGNER	Jaya International Design
LIGHTING CONSULTANT	Hadi Komara & Associate
PROJECT DATE	2016



Four Seasons Resort Seychelles at Desroches Island

Seychelles // Hospitality

A hideaway like no other, the Four Seasons Resort Seychelles at Desroches Island promises nothing but a sheer disconnect from the world. The only resort in one of the world's most beautiful virgin islands, this oasis is a dream come true for the thrill seekers and peace lovers alike. From its beguiling marine life, its untouched beaches to its lush medley of flora and fauna, an unforgettable journey awaits.

SCOPE OF WORK	Architectural & Decorative Lighting
CLIENT	Desroches Island Development
INTERIOR DESIGNER	eco-id
LIGHTING CONSULTANT	Myna
PROJECT DATE	2016







Gili Lankanfushi

Maldives // Hospitality

With its unrivalled panoramic view of the sapphire seascape glimmering under the glorious sunrises and spectacular sunsets, Gili Lankanfushi is indeed a perfect getaway destination. One of the rare ones advocating sustainability with its eco-friendly ethos, Gili redefines luxury by showcasing the natural beauty of the island yet keeping its impeccable service of top priority. At Gili where everything is sustainable, guests are inspired to live a more responsible lifestyle gearing towards alleviating carbon footprints.

SCOPE OF WORK Architectural & Decorative Lighting
CLIENT Promus
INTERIOR DESIGNER Design Basis
LIGHTING CONSULTANT Fabulux
PROJECT DATE 2019





Hilton Hotel Ballroom

Singapore // Hospitality

With its century old heritage in world-class hospitality, Hilton Singapore remains to be one of the most sought-after hotels in the city. Stylish, forward and smart, it never ceases to shape guest's experiences with its authentic yet contemporary touch reflected in each detail. Nestled at the heart of the city, it opens up a door to infinite gastronomic indulgence and unparalleled retail therapy which begins right within the hotel's shopping gallery.

SCOPE OF WORK	Decorative Lighting
CLIENT	Hotel Properties Limited
INTERIOR DESIGNER	FBEye International
LIGHTING CONSULTANT	Fabulux
PROJECT DATE	2017





InterContinental

Singapore // Hospitality

Set in the heart of Singapore's historical enclaves, this luxury landmark exudes an undeniably opulent charm, spiced up with a dash of local flavour, that is reflected in its world-renowned hospitality. Each room at the InterContinental Singapore offers a sneak preview of authentic Singapore, with an array of contemporary and heritage-inspired furnishings that highlight an unrivalled guest experience for both business and leisure travellers.

SCOPE OF WORK	Architectural & Decorative Lighting
CLIENT	Frasers Hospitality
INTERIOR DESIGNER	FBEYE International
LIGHTING CONSULTANT	Red Engineering
PROJECT DATE	2015



M Social

Singapore // Hospitality

Overlooking the picturesque Singapore River, set against the vibrant scenes of Robertson Quay, stands yet another vision from the mind of renowned designer Philippe Starck. M Social Singapore is a hotel for those who explore, the curious, and the ones who dare to dream. Featuring 293 rooms, each one unique, this charming gem beckons wanderers both local and from abroad.



SCOPE OF WORK	Decorative Lighting
CLIENT	City Development Limited
INTERIOR DESIGNER	Philippe Starck
LIGHTING CONSULTANT	Light Cibles
PROJECT DATE	2016





Mandarin Oriental Kuala Lumpur

Malaysia // Commercial

Set amidst the iconic Petronas Twin Tower and KLCC Park, the Mandarin Oriental paints the most picturesque skyline view of Kuala Lumpur. A perfect address to kick-start an enthralling exploration in the eclectic city, it ensures an unrivalled comfort that soothes the senses and fills the heart after a long day with its feast-worthy dining spread and spacious guest rooms.



SCOPE OF WORK	Architectural & Decorative Lighting
CLIENT	Mandarin Oriental Kuala Lumpur
INTERIOR DESIGNER	Wilson Associates
LIGHTING CONSULTANT	Prismatic Design
PROJECT DATE	2017



Orchard Hotel

Singapore // Hospitality

With its newly-appointed contemporary classic guest rooms accentuated with oriental touches, Orchard Hotel envisions an unparalleled guest experience from arrival to check-out. Boasting nothing but exceptional dining options, fully-equipped amenities and expansive event spaces, this upscale property truly deserves all the prestigious accolades.



SCOPE OF WORK	Decorative Lighting
CLIENT	Millennium Hotels & Resorts
INTERIOR DESIGNER	Millennium Hotels & Resorts Global Interior Designer
LIGHTING CONSULTANT	Bo Steiber Lighting Design
PROJECT DATE	2019







PARKROYAL on Pickering

Singapore // Hospitality

PARKROYAL on Pickering has a unique hotel concept of lofty sky gardens, and an exclusive rooftop Orchid Club lounge that offers amazing 360 degree views of the Singapore skyline. Enjoy modern comfort in rooms and suites, and a dedicated wellness floor with terrace pool, spa and jogging track high above street level.

SCOPE OF WORK	Architectural & Decorative Lighting
CLIENT	UOL Group
ARCHITECT	WOHA Architects
LIGHTING CONSULTANT	Lighting Planners Associates
PROJECT DATE	2013





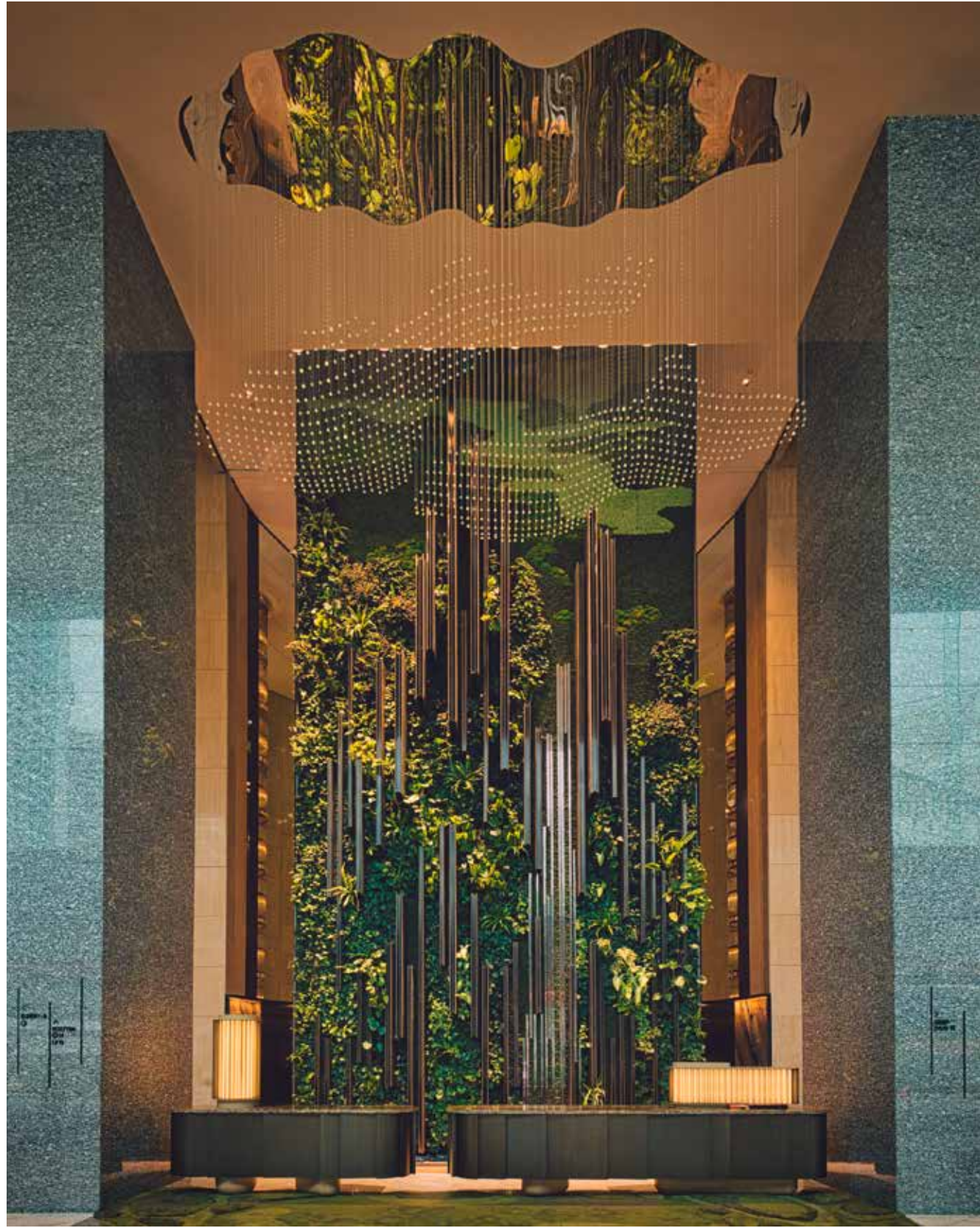
PARKROYAL COLLECTION Marina Bay

Singapore // Hospitality

A first of its kind in Singapore, the PARKROYAL COLLECTION Marina Bay boasts its “**garden-in-a-hotel**” concept. True to its brand’s ode to sustainability, the former Marina Mandarin has transformed into a lush and verdant haven adorned with landscaped walls and decked with distinctive interiors. With the breathtaking picturesque view of the Marina Bay to complete the experience, this garden hotel is indeed a perfect escape for nature lovers

SCOPE OF WORK Architectural & Decorative Lighting
CLIENT UOL Group
ARCHITECT FDAT Architects
LIGHTING CONSULTANT Light Collab
PROJECT DATE 2021









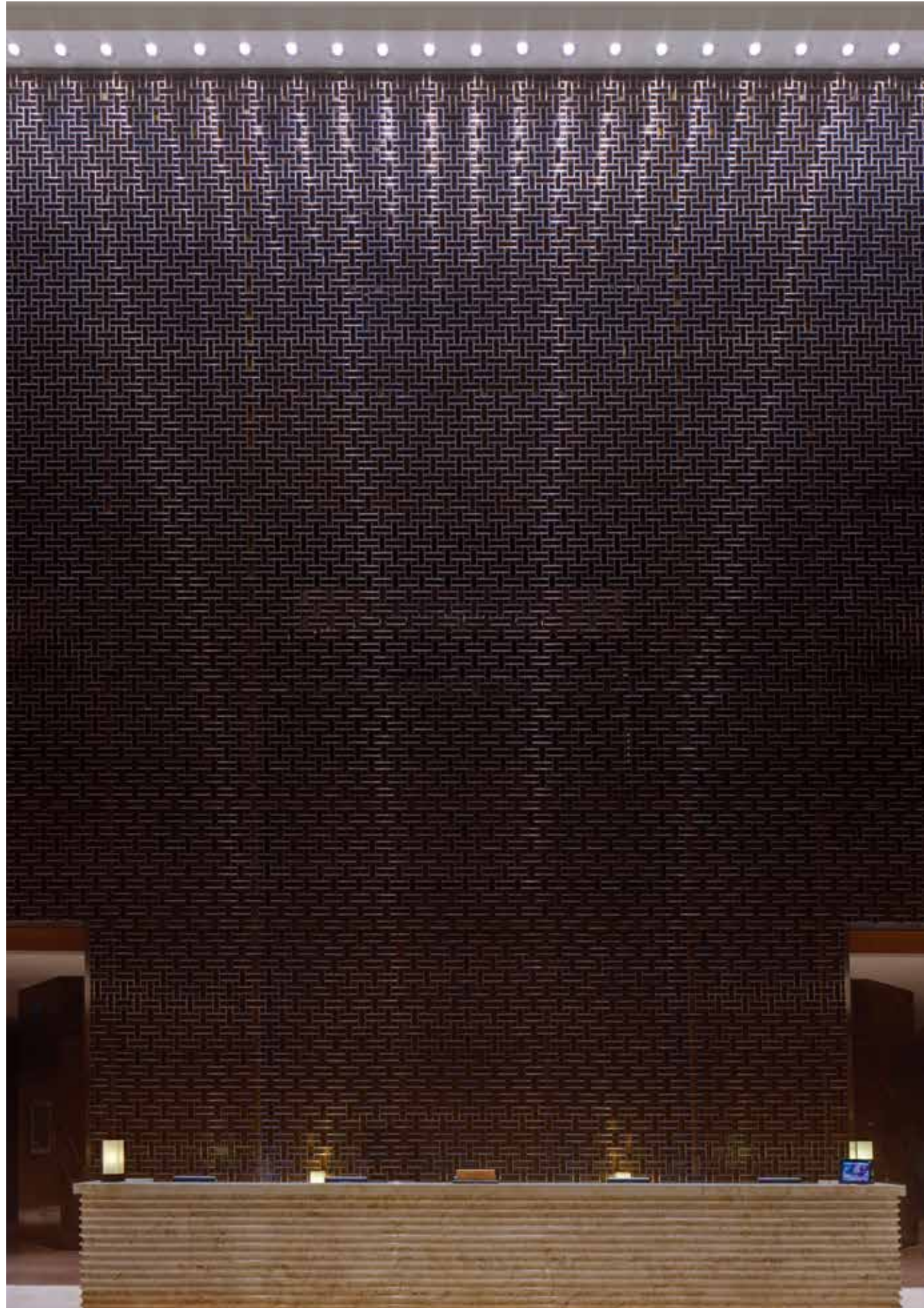
Royal Plaza on Scotts

Singapore // Hospitality

Indulge in the comforts of your home away from home that is strategically located in Singapore's iconic shopping district, Orchard Road. Home to Carousel, one of the best buffet restaurants offering halal certified gastronomic delights, the Royal Plaza on Scotts remains true to its brand values reflected in its excellent customer service standards.

SCOPE OF WORK	Architectural & Decorative Lighting
CLIENT	Design Studio Group
INTERIOR DESIGNER	Axis ID
LIGHTING CONSULTANTS	Axis ID / Million Lighting
PROJECT DATE	2018





Singapore Marriott Hotel

Singapore // Hospitality

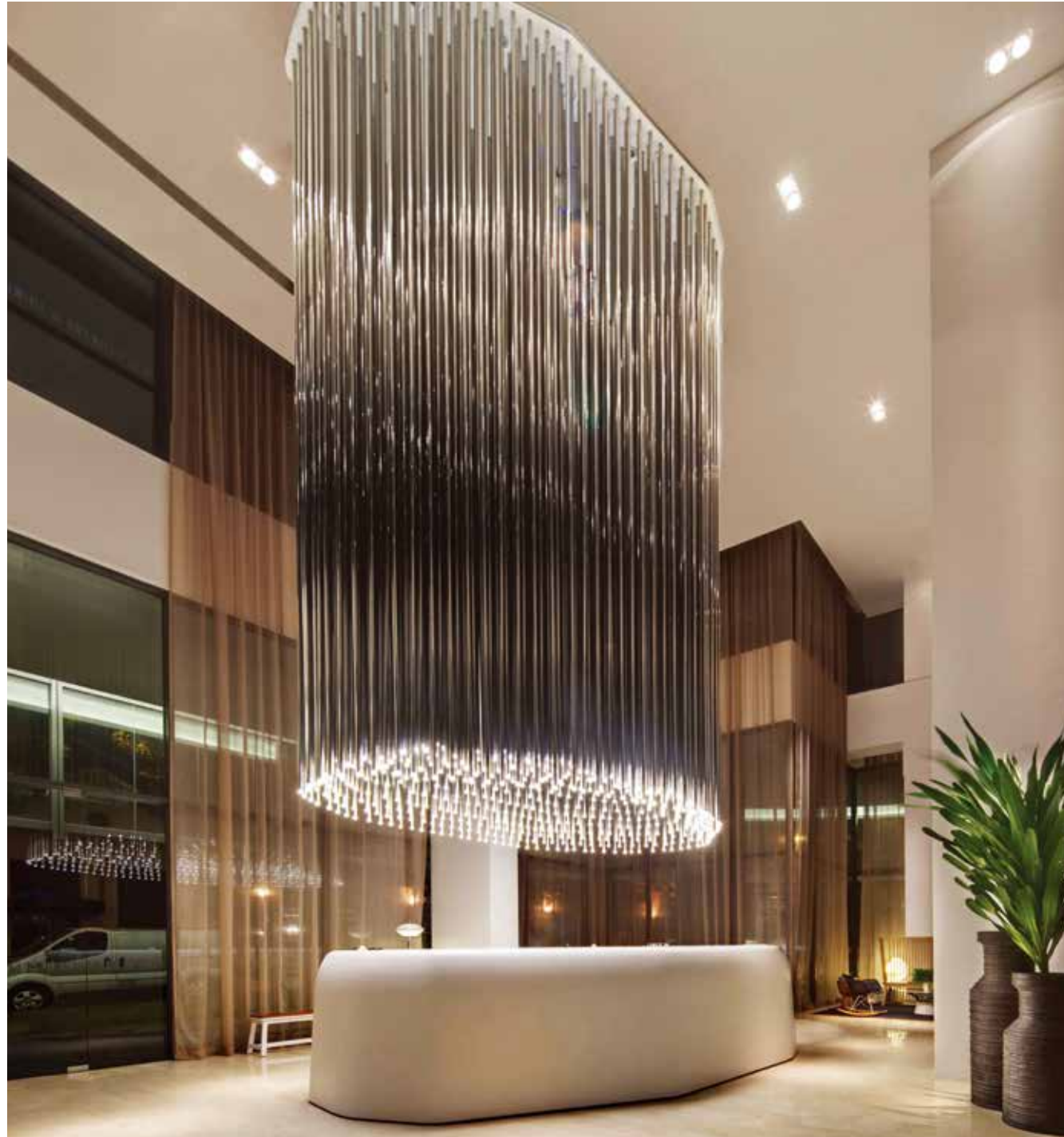
Located in the heart of the business, shopping and entertainment district, Singapore Marriott Hotel is known for its iconic green pagoda towering over Orchard Road.

This 5-star hotel boasts 393 guest rooms, including pool terrace rooms and splendid suites. Recently refurbished to offer a new level of luxury, the guest rooms feature LCD high-definition televisions, high-speed internet, a smoke-free environment and the famed Marriott Revive bedding.



SCOPE OF WORK	Architectural & Decorative Lighting
CLIENT	Singapore Marriott Hotel
INTERIOR DESIGNER	Hirsch Bedner Associates
LIGHTING CONSULTANT	The Lightbox
PROJECT DATE	2012

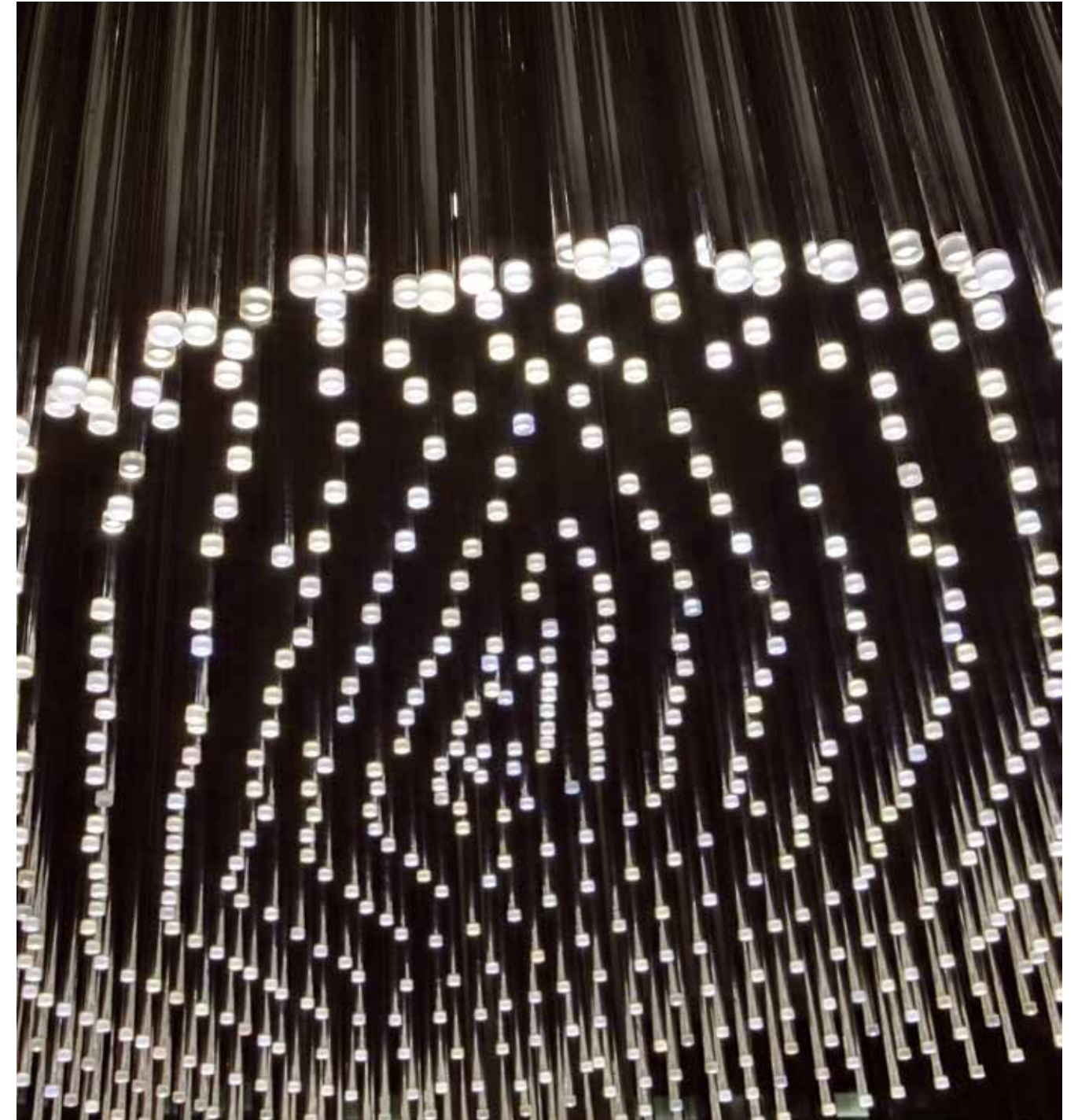




Studio M Hotel

Singapore // Hospitality

Singapore's first fully loft-inspired hotel where style and functionality are expressed with the elegance of Italian architect and design maestro, Piero Lissoni. The epitome of chic and savvy living, located within Singapore's vibrant entertainment precinct.



SCOPE OF WORK

CLIENT

ARCHITECT

PROJECT DATE

Decorative Lighting

Millennium & Copthorne Hotels

Ong&Ong Pte Ltd

2010

Swissotel The Stamford

Singapore // Hospitality

Nestled amidst the heartbeat of the city, the Swissotel The Stamford awaits the discerning guests with its curated signature Swiss hospitality. With over a thousand refined guestrooms and luxurious suites housed in one of the tallest hotels in Southeast Asia, this unrivalled address never fails to indulge the epicurean with its sheer decadent services set against the thriving panoramic skyline of Singapore.



SCOPE OF WORK	Architectural & Decorative Lighting
CLIENT	Accor Hotel
INTERIOR DESIGNER	Wilson Associates
LIGHTING CONSULTANT	Myna
PROJECT DATE	2017





Cafe Swiss
SCOPE OF WORK Architectural & Decorative Lighting
CLIENT Accor
INTERIOR DESIGNER Wilson Associates
LIGHTING CONSULTANT Brandston Partnership Inc
PROJECT DATE 2019



The Pan Pacific Hotel

Singapore // Hospitality

A gateway to Singapore's most picturesque attractions, The Pan Pacific offers luxurious comfort guests could savour after a long day of an urban getaway. Whether it is for business or leisure, this bespoke address walks the extra mile in offering the finest experiences.

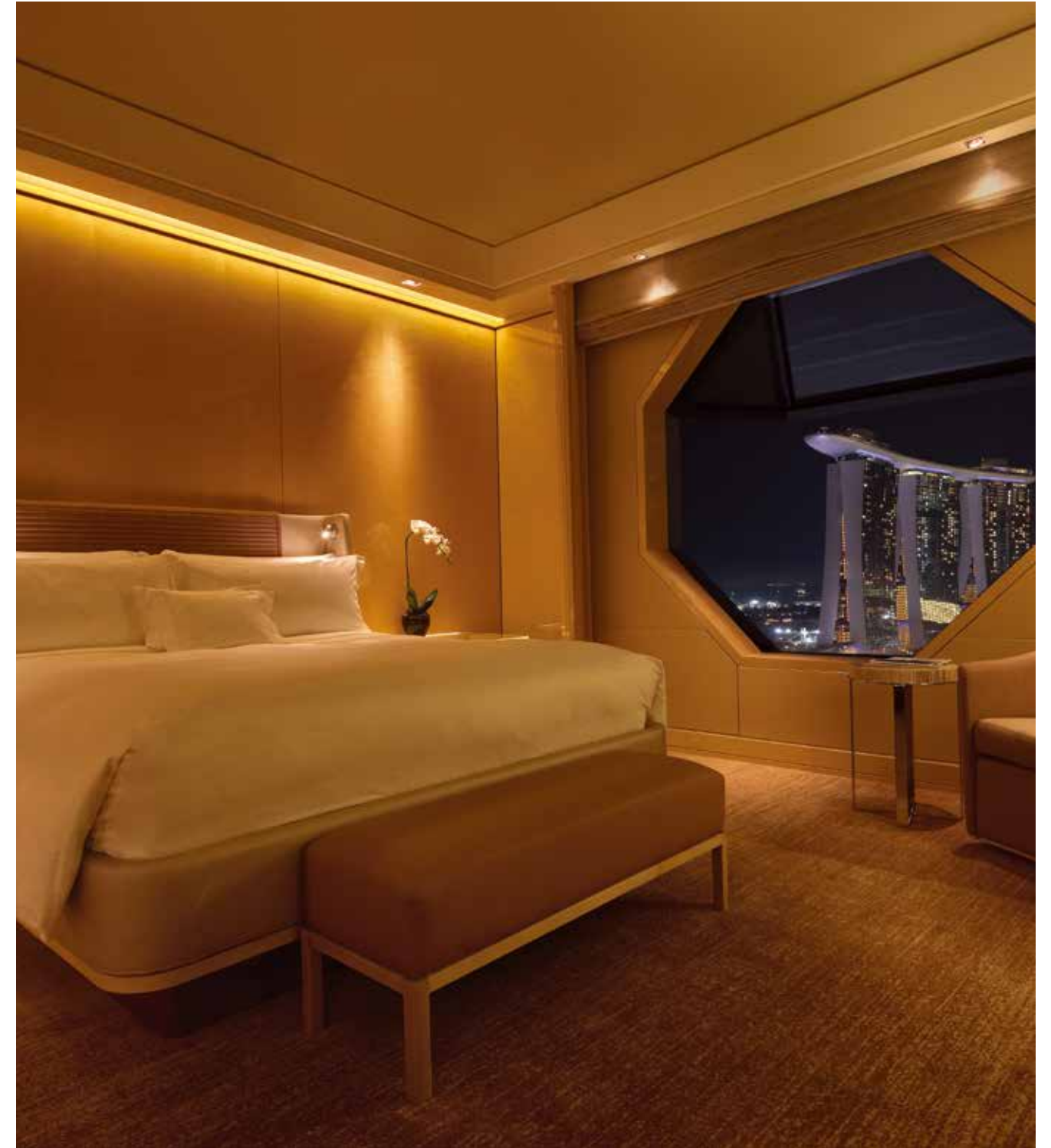
SCOPE OF WORK Decorative Lighting
CLIENT The Pan Pacific Hotel Singapore
INTERIOR DESIGNER KKS International
LIGHTING CONSULTANT Myna
PROJECT DATE 2018



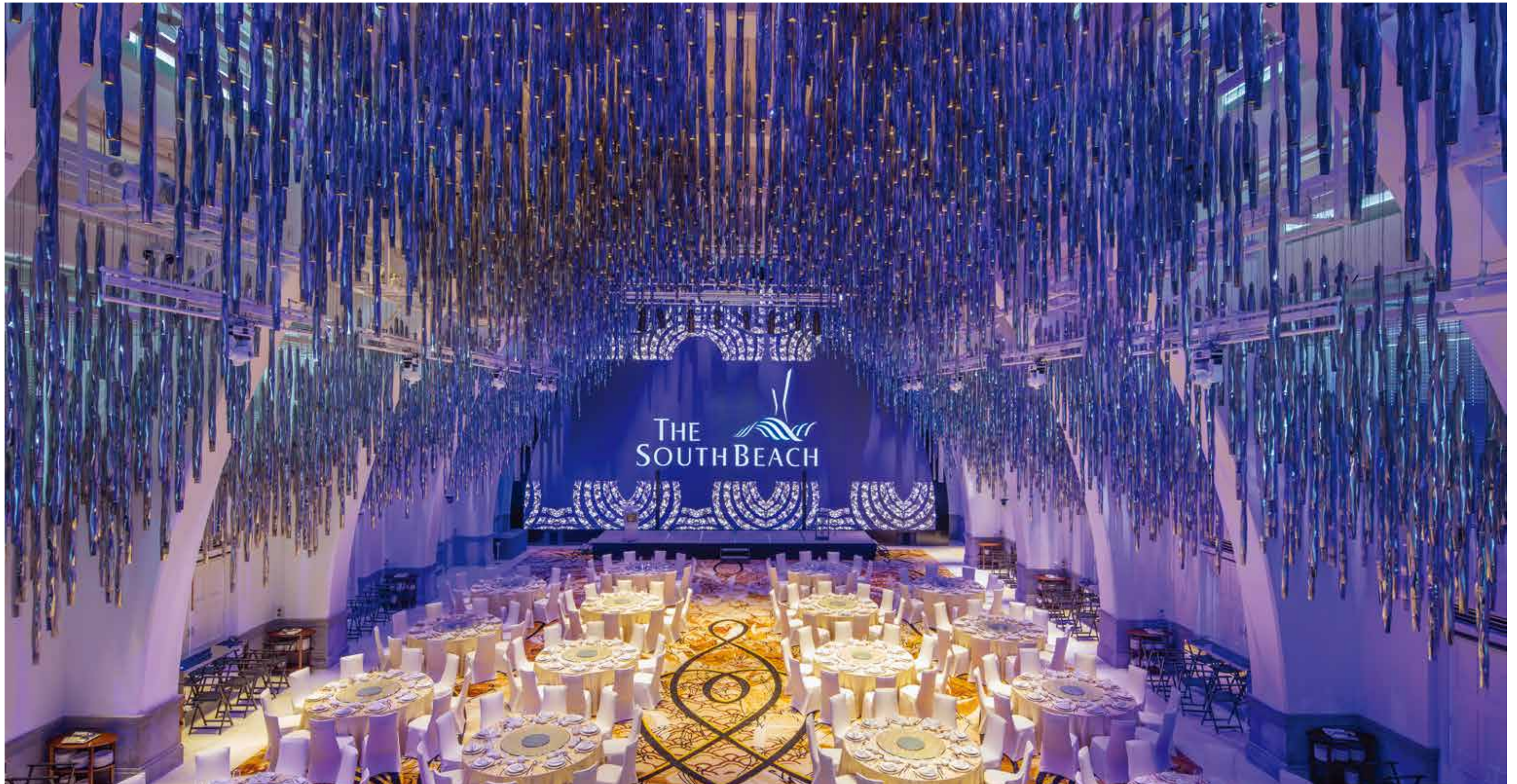
The Ritz-Carlton, Millenia

Singapore // Hospitality

The Ritz-Carlton, Millenia Singapore is a luxury hotel located in Marina Centre, the largest and fastest growing business and commercial centre in Singapore. Featuring 608 newly-renovated guestrooms with unobstructed views of the skyline and Marina Bay, award-winning dining and a soothing spa, The Ritz-Carlton hotel is a luxurious oasis nestled in the heart of the city, and is a short scenic stroll away from the integrated resort.



SCOPE OF WORK	Decorative Lighting
CLIENT	Pontiac Land Group
INTERIOR DESIGNER	Burega Farnell
PROJECT DATE	2011



The South Beach

Singapore // Hospitality

A stunning landmark, The South Beach is the latest addition to Singapore's dynamic skyline. The site of a former military camp, the historic buildings were restored and incorporated into a breathtaking 5-star hotel designed by the inimitable Philippe Starck. This 654-room structure blends contemporary architecture with elements of the nation's past. Quirky yet tasteful furnishings help create infinite experiences for the adventurous guest.

SCOPE OF WORK	Decorative Lighting
CLIENT	South Beach Consortium
INTERIOR DESIGNER	Phillippe Starck
LIGHTING CONSULTANT	Light Cibles
PROJECT DATE	2016









The St. Regis Kuala Lumpur

Malaysia // Hospitality

The newest benchmark of luxury has opened its doors in the heart of Kuala Lumpur where the discerning embarks on an unforgettable experience of both old-fashioned grandeur and modern sophistication. It boasts the largest standard rooms in the city that offers a panoramic view of its vibrant skyline, an eclectic culinary experience handcrafted by a team of master chefs, as well as the state-of-the-art facilities.

SCOPE OF WORK
CLIENT
INTERIOR DESIGNER
PROJECT DATE

Architectural & Decorative Lighting
One IFC Residence
GA Design
2016





The St. Regis Hotel Singapore

Singapore // Hospitality

A global paragon of grandeur and opulence, the St Regis Singapore is their first in Southeast Asia. Offering its unrivalled bespoke hospitality and signature St Regis Butler service complemented with visually captivating aesthetics and interiors, the guest can expect nothing but sheer excellence in everything. Indeed, the most prominent address in this tropical oasis where luxury is exquisitely defined.



SCOPE OF WORK	Decorative Lighting
CLIENTS	City Development Limited / Kajima Overseas Asia
INTERIOR DESIGNER	Avalon Collective
LIGHTING CONSULTANT	Myna
PROJECT DATE	2019







The Westin Singapore

Singapore // Hospitality

Located downtown in Singapore's prestigious financial district, situated on beautiful Marina Bay, every aspect of the Westin is carefully selected to create an emotional connection. Guests are welcomed with a treat for the senses: warm lighting, beautiful botanical arrangements, signature music, and the calming scent of white tea.

SCOPE OF WORK	Decorative Lighting
CLIENT	Blackrock Singapore
INTERIOR DESIGNER	FBEYe International
PROJECT DATE	2013





INTERIOR

INSTITUTIONS

Typically large scale in nature, institutional projects require specific expertise to deliver on their technical requirements, scale and optimal functionality. Million Lighting's mastery of customisation, integration, scalability and control solutions provides reliable, comprehensive and seamless solutions for such projects.



Asian Civilisations Museum Singapore

Singapore // Institutions

Dubbed the cultural melting pot of Asia, Singapore showcases its diverse heritage at one of the pioneering museums that focus on Asian history, the Asian Civilisations Museum. Located at the mouth of the Singapore River, the ACM takes you on a journey of the peoples from around the region.

SCOPE OF WORK	Architectural Lighting
CLIENT	Singapore Heritage Board
LIGHTING CONSULTANT	Arup
PROJECT DATE	2015



Buddha Tooth Relic Temple and Museum

Singapore // Institutions



This 4-storey Buddhist temple and cultural complex in Singapore's Chinatown district combines the architectural style of the Tang Dynasty with the Buddhist concept of the Mandala. It was built to house relics of the Buddha, and as a shrine devoted to the future Buddha.

SCOPE OF WORK	Architectural Lighting
CLIENT	Buddha Tooth Relic Temple
PROJECT DATE	2008





Church of St Mary of the Angels

Singapore // Institutions

A Catholic church originally built in 1970. Expanded and redeveloped more than three decades later, its unique balance between liturgical tradition and contemporary expression earned the prestigious President's Design Award in 2006.

SCOPE OF WORK	Architectural Lighting
CLIENT	Church of St Mary of The Angels
PROJECT DATE	2007

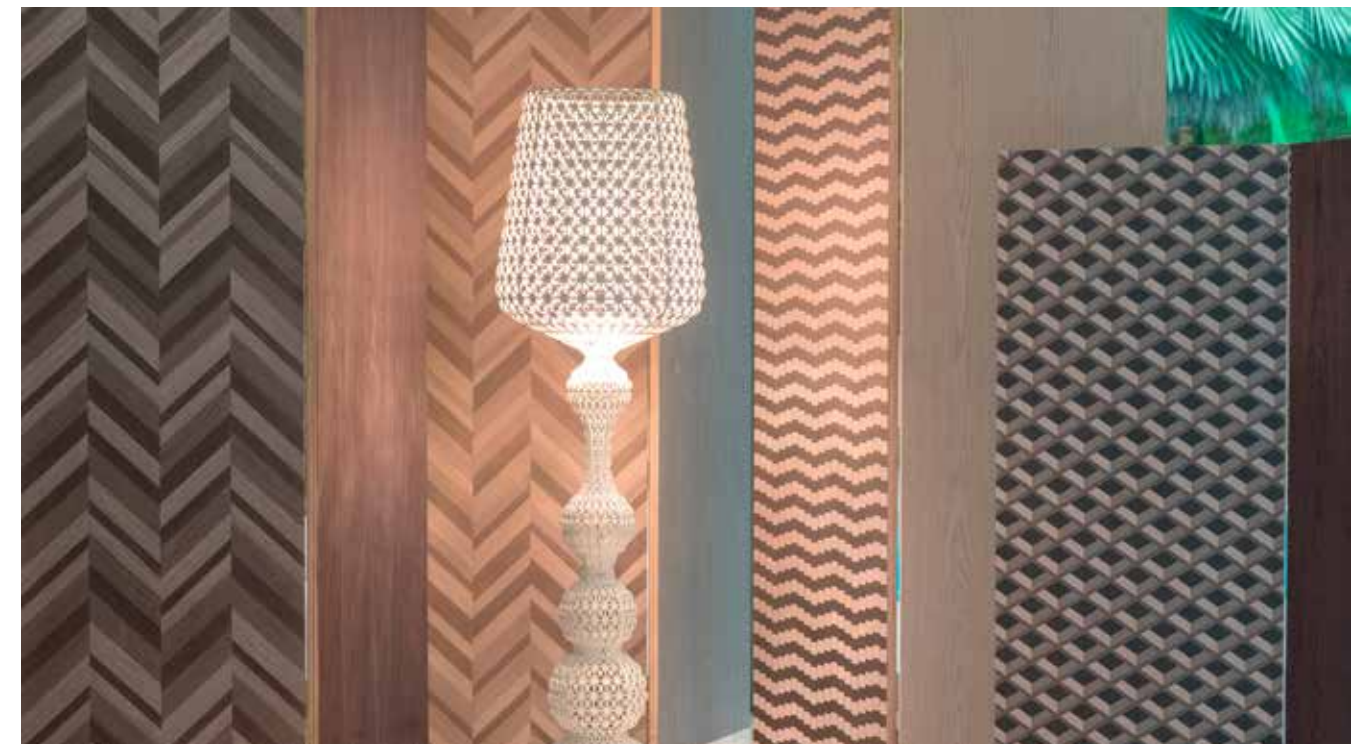
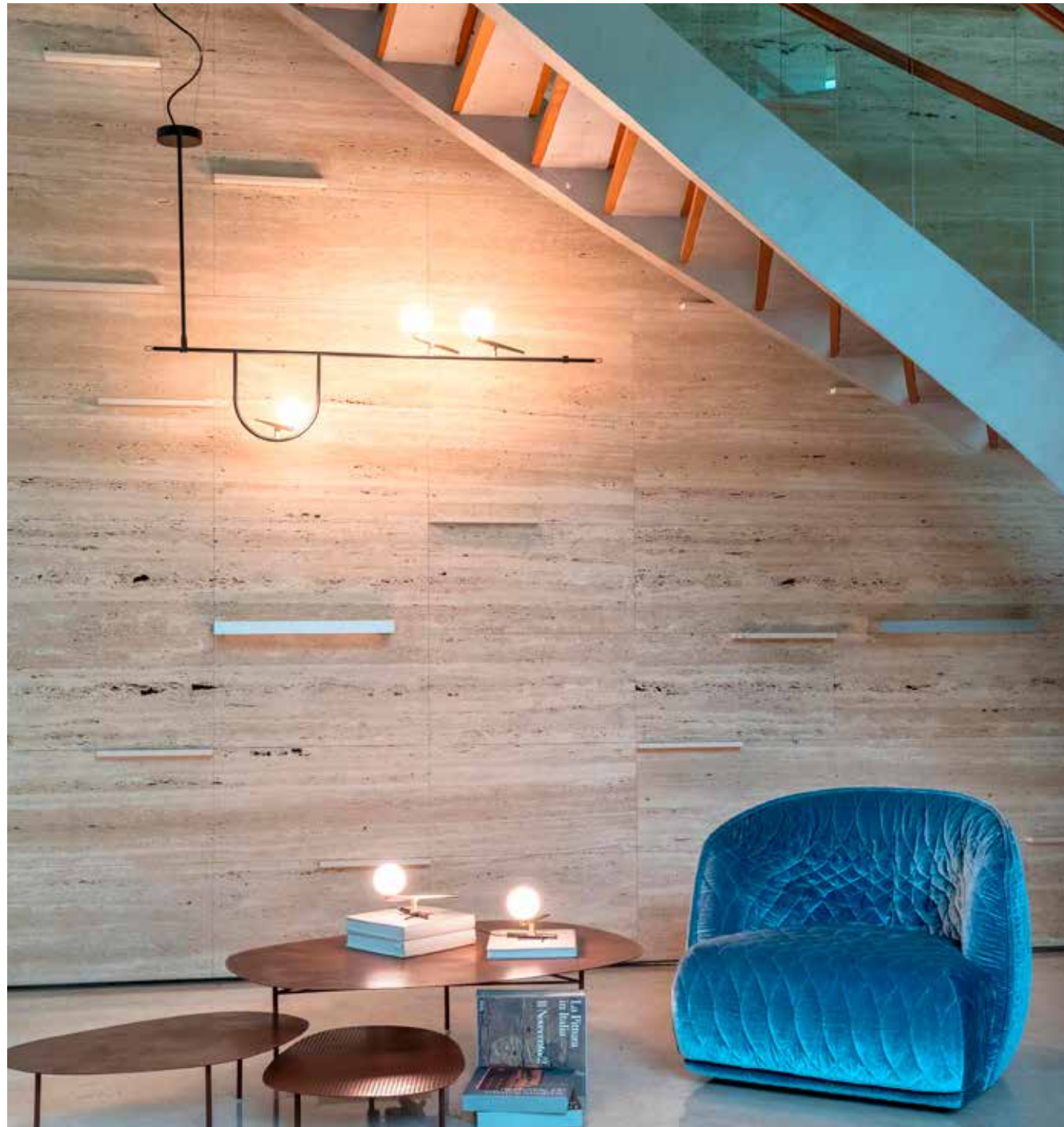


Italian Design Week

Singapore // Event

To celebrate the Italian Design Day, the Ambassador of Italy opens the doors of his residence with a special interior setting “**Design Meets Nature,**” curated by the Italian designer Savina Nicolini. Million Lighting in synergy with Artemide, Foscarini & Kartell, filled the space with contemporary atmosphere, giving a warmer and more welcoming character to the event. .

INTERIOR DESIGNER Savina Nicolini, SNA Design





Singapore Management University School of Law

Singapore // Institutions

In its quest to set a higher bar in education, Singapore Management University (SMU) leaps to greater heights on its new School of Law building. Another landmark in the making, it is a distinctive form of architecture with sustainable design and state-of-the-art facilities created to foster interaction, engagement and inspiration among the students and the legal community. The new building is complete with a dedicated moot court and a 500-seater Kwa Geok Choo Law Library, named in memory of the late Mrs Lee KuanYew.

SCOPE OF WORK	Architectural Lighting
CLIENT	Kajima Overseas Asia
INTERIOR DESIGNER	MKPL Design
LIGHTING CONSULTANT	Lighting Planners Associates
PROJECT DATE	2017





Million + Soles4Souls

Million has partnered with Soles4Souls since 2017 and has since collected more than 300,000 pairs of shoes after hosting five shoe collection drives in Singapore. In 2018, Million traveled to India with Soles4Souls Travel to experience its first shoe distribution in Agra, Jaipur and Delhi. Subsequently local distributions we organised with Jamiyah Children's Home, Meta School and Ghim Moh Community as beneficiaries.

Since 2006, Soles4Souls has collected and distributed 30 million pairs of shoes to those in need in 127 countries around the world and all 50 states in the United States. It continues its mission of creating sustainable jobs and providing relief through the distribution of shoes and clothing around the world.





